

PROTEUS PR100

Colt Proteus PR 100 is an extruded, single bank aluminium fixed louvre system available in a 100mm pitch configuration, used for screening and/or ventilation. The aluminium louvres are very often used as plant room louvres, or indeed anywhere where plant needs to be covered up.

Proteus can provide an a good balance of rain defence and aerodynamic efficiency.

Proteus can be uniquely configured to provide the solution to your needs. An Operable version is also available.

FEATURES AND BENEFITS

Aesthetically pleasing - a simple, clean extruded aluminium louvre with sharp, crisp edges to give a continuous appearance.

Reduced energy costs - highly aerodynamically efficient. This reduced air resistance allows the plant and the aperture to be smaller thereby saving running costs.

Enhanced performance - aerodynamically efficient and highly resistance to weather.

Proven performance - tested to EN 13030:2001.

Easy to install – it can either be delivered to site pre-assembled or as a kit of parts.

A wide range - available in various shapes, configurations, and finishes to meet the requirements of almost any project.

Optional accessories - a large selection of optional accessories is available, such as mitred corners, special shapes or louvre doors. If noise reduction is required, acoustic louvre panels may be supplied by us.

Design service - Colt provides a pre-order design service.

Please contact Colt for more information relating to the application, specification, installation or servicing of Proteus.

PERFORMANCE

Airflow

Air Inlet - 0.37 (including bird guard)
Air Extract - 0.45 (including bird guard)

Rain Defence

Class A2 - up to 0m/s suction velocity
Class B2 - up to 1.5m/s suction velocity
Class C2 - up to 2.0m/s suction velocity
Class D2 - up to 3.5m/s suction velocity

Options

Special shapes
Doors
Roof turrets



PRODUCT SPECIFICATION

Product Name Manufacturer Louvre profile Construction

Colt Proteus Louvre type PR 100
Colt International Pty Ltd
Single Bank extruded 100 mm pitch
Quality corrosion resistant aluminium alloy.
Louvre blades shall not be drilled but clipped and not riveted or screwed to structural supporting mullions. Mullions shall be concealed at 1250mm maximum centres and their points of support along their length shall be in accordance with prevailing wind pressures (as calculated and specified by a structural engineer). Mullions manufactured from 2mm sheet such that associated support steelwork is reduced to a minimum.

Cills and frames Corners Paint Finish

Shall contain all peripheral fixings
Extruded mitre corner pieces / mitred cut
Partially coated / totally coated to any RAL polyester powder colour
Partial / total finish
Anodised finish

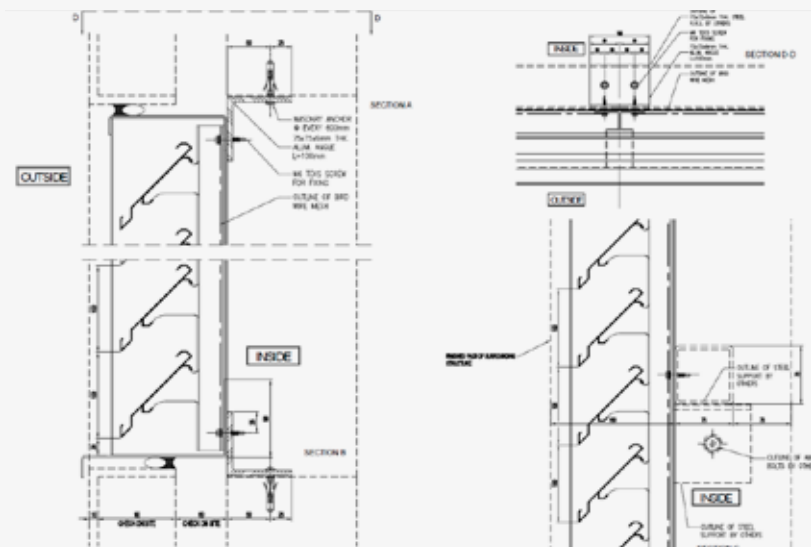
Guards Optional extras

Insect / bird / security
Acoustic modules
Blanking panels (single skin or insulated)
Louvre doors
Roof turrets.

Fixing

The ventilator is designed to be fitted into an opening and/or supporting members supplied and fitted by others.

SECTION DETAILS



ASSEMBLY

